

Supporting Information

Content

Fig. S1. ^1H NMR spectrum (500 MHz) of TPECH₂OH in CDCl₃/TFA-*d*₆.

Fig. S2. ^1H NMR spectrum (500 MHz) of Boc-Glu(TPE)-OtBu in CDCl₃/TFA-*d*₆.

Fig. S3. ^1H NMR spectrum (500 MHz) of TPELG in CDCl₃/TFA-*d*₆.

Fig. S4. ^{13}C NMR spectrum (500 MHz) of TPELG NCA in CDCl₃/TFA-*d*₆.

Fig. S5. HR-MS analysis of TPELG NCA.

Fig. S6. DLS results of DOX-loaded micelles with (A) 5 %, (B) 10 % and (C) 20 % drug feeding amount.

Fig. S7. The photographs of DOX-loaded micelles under ambient light (a) and 365 nm irradiation (b).

Fig. S8. Drug release from DOX-loaded micelles in PBS buffer.

Table S1 Parameters of DOX-loaded micelles with 5 %, 10 % and 20 % drug feeding amount.

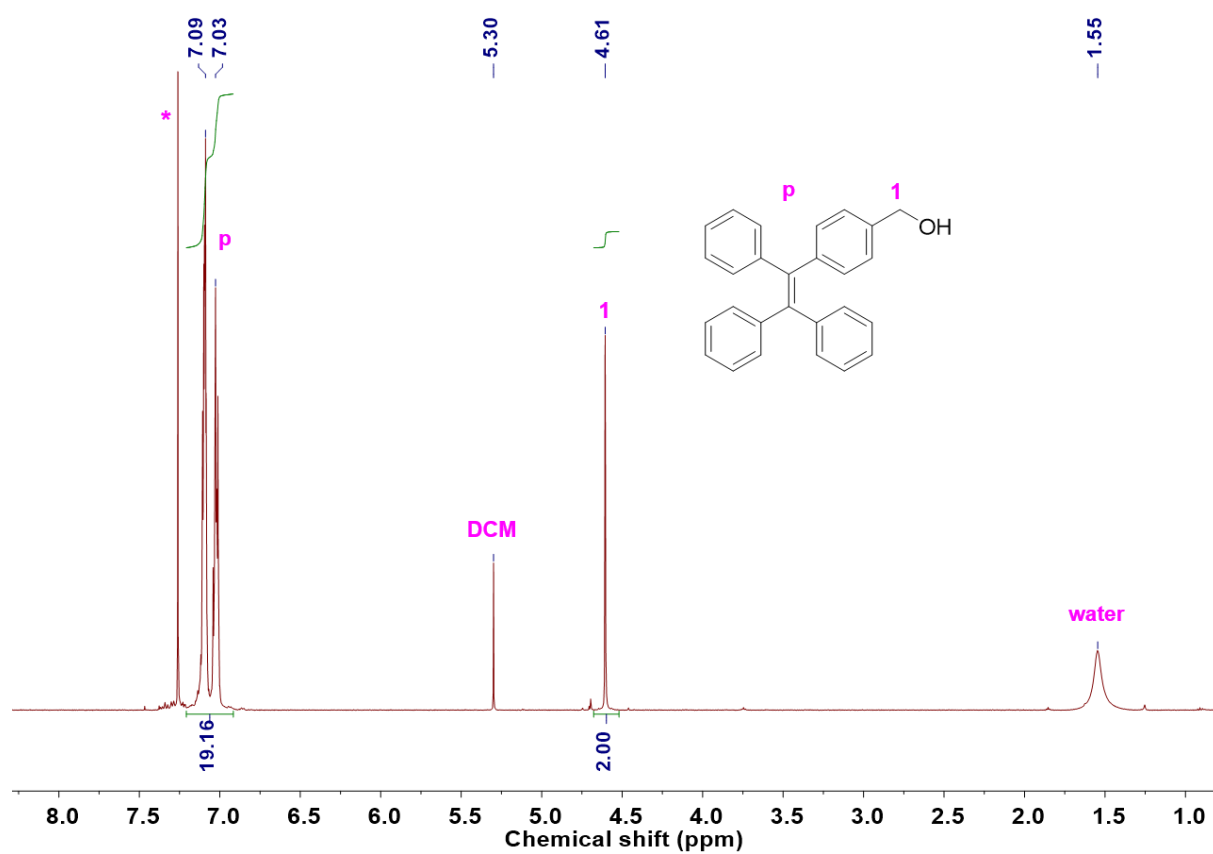


Fig. S1. ^1H NMR spectrum (500 MHz) of TPECH₂OH in CDCl₃/TFA-*d*₆.

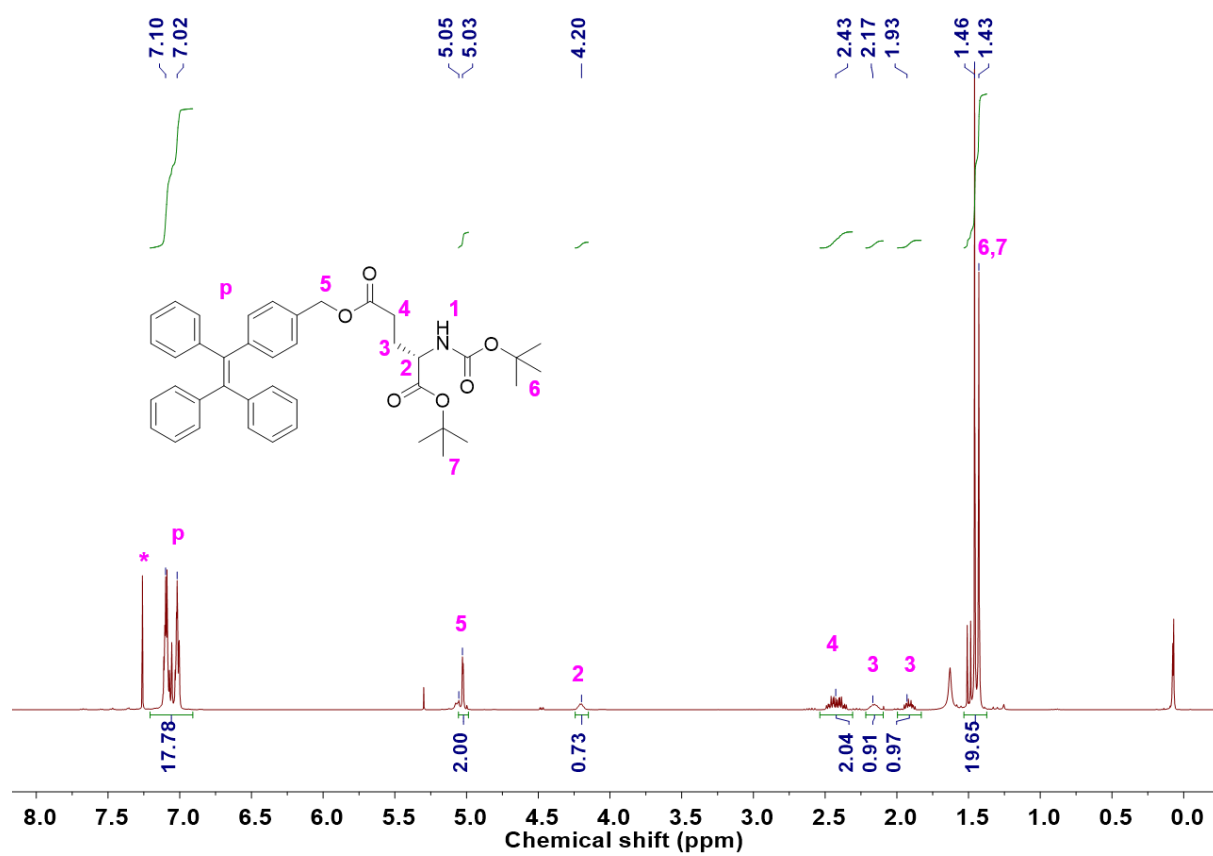


Fig. S2. ¹H NMR spectrum (500 MHz) of Boc-Glu(TPE)-OtBu in CDCl₃/TFA-*d*₆.

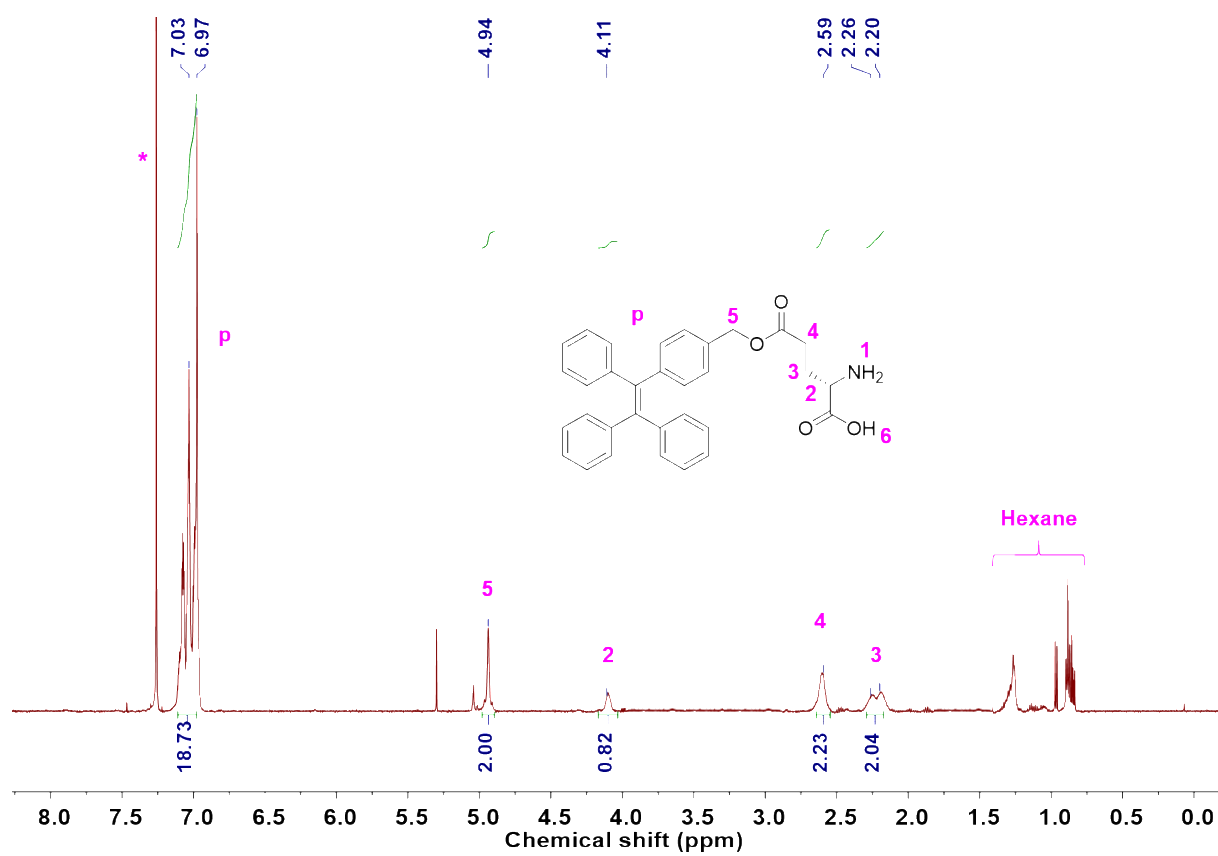


Fig. S3. ^1H NMR spectrum (500 MHz) of TPELG in $\text{CDCl}_3/\text{TFA-}d_6$.

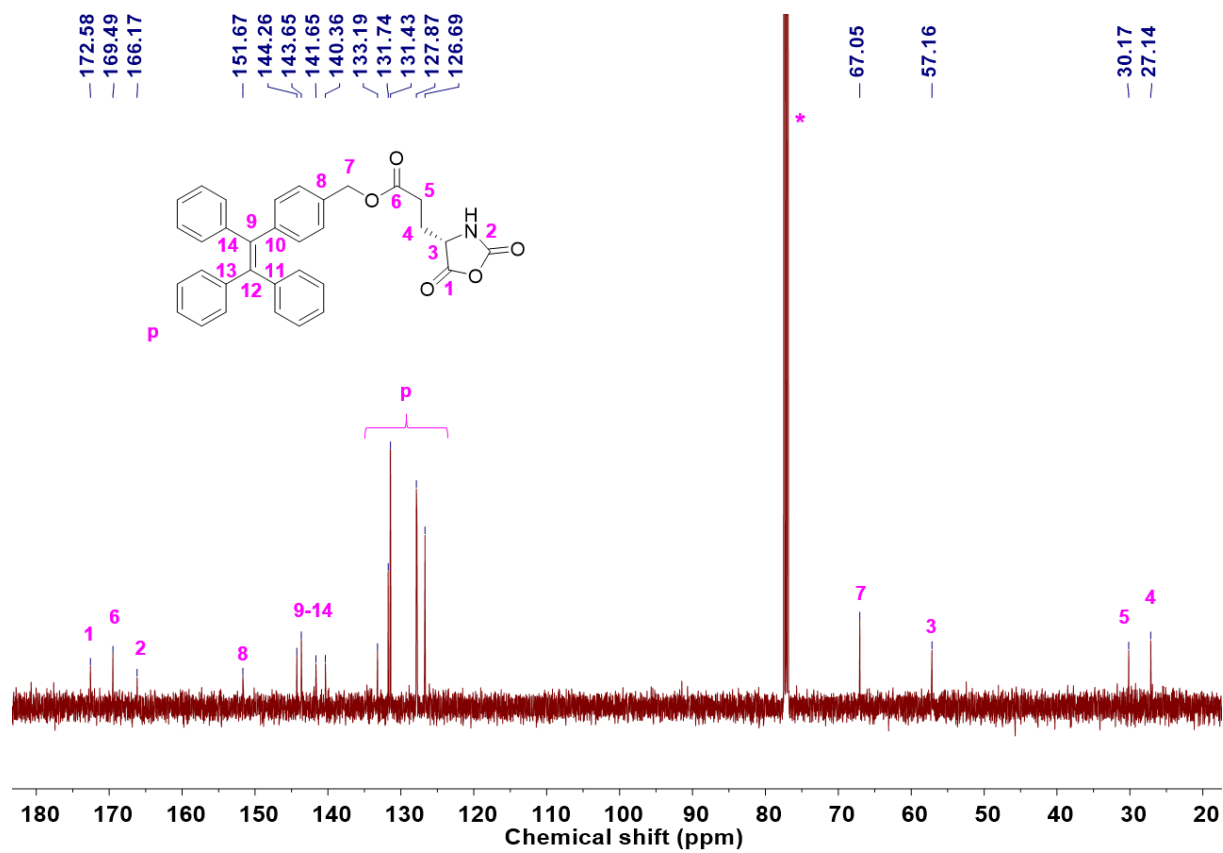


Fig. S4. ^{13}C NMR spectrum (500 MHz) of TPELG NCA in $\text{CDCl}_3/\text{TFA-}d_6$.

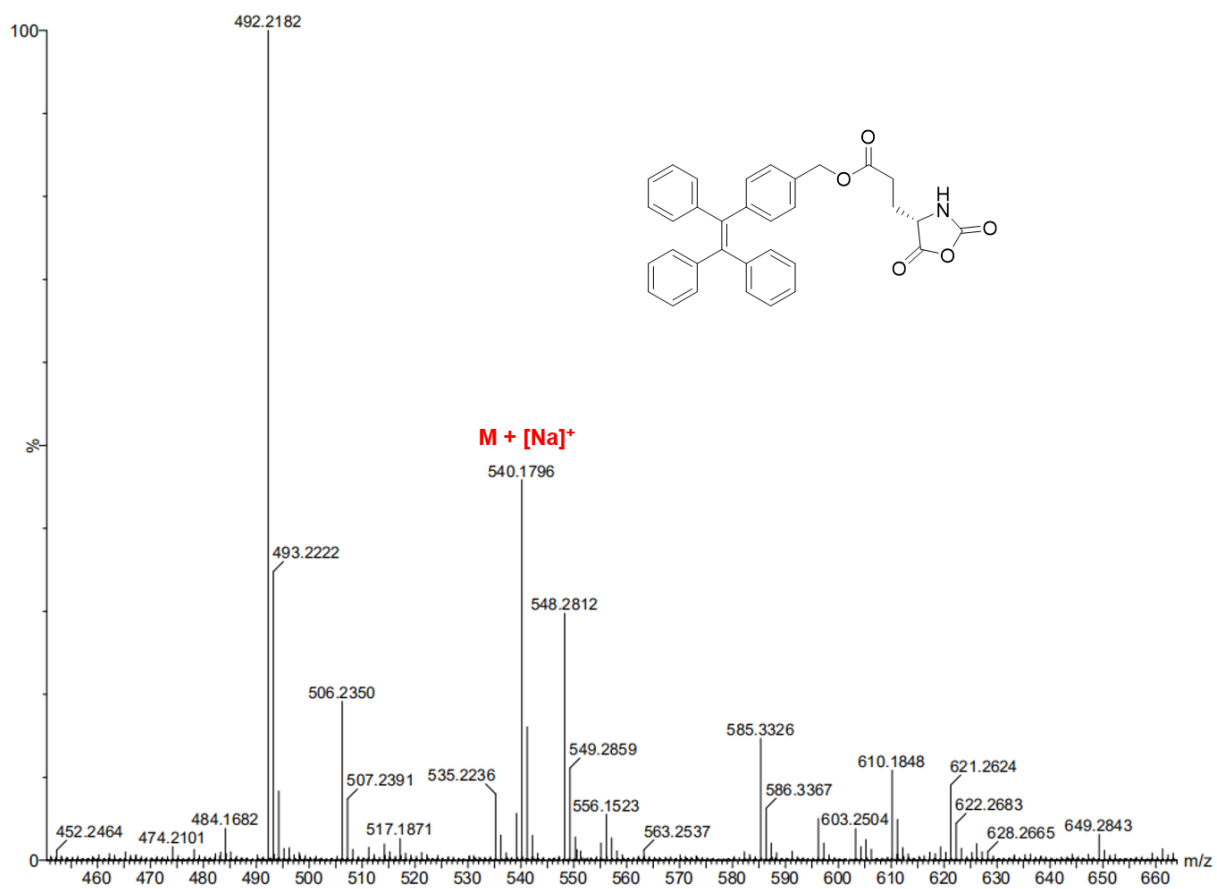


Fig. S5. HR-MS analysis of TPELG NCA.

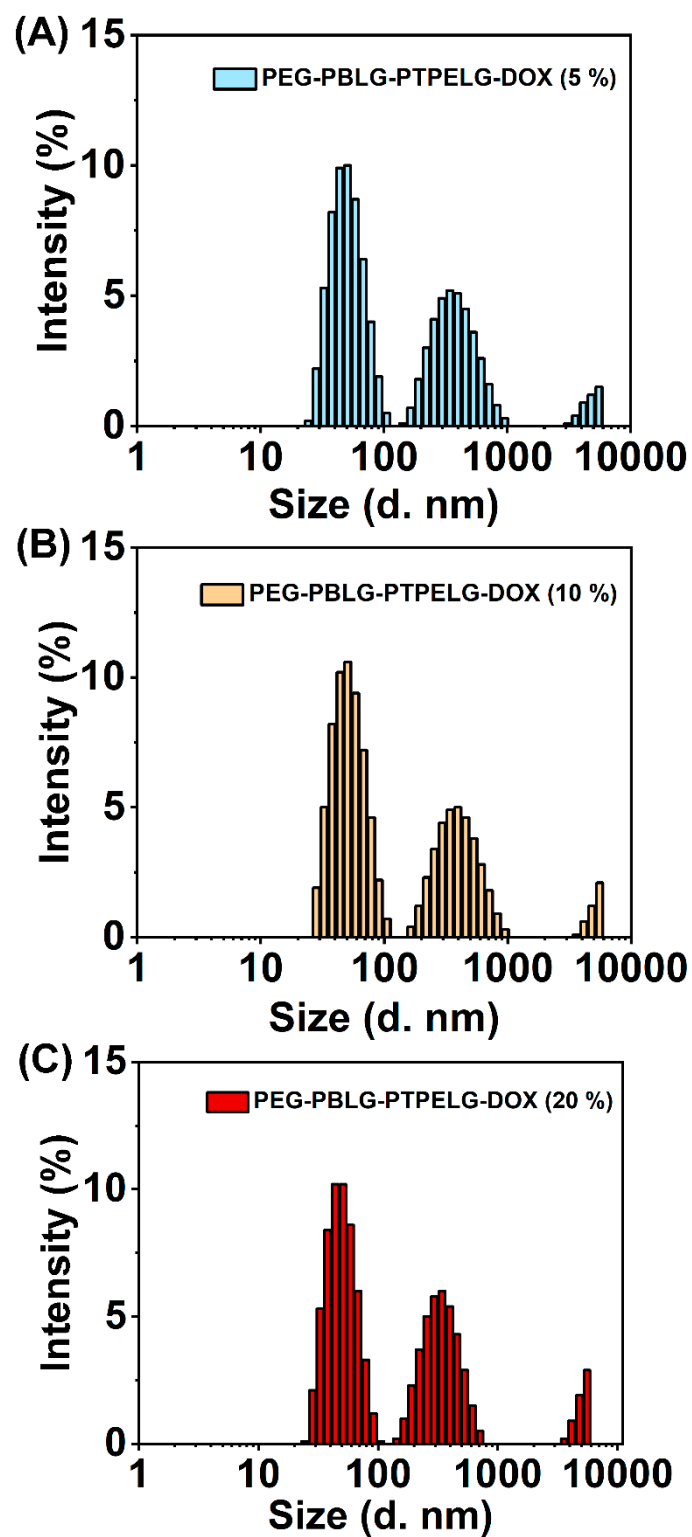


Fig. S6. DLS results of DOX-loaded micelles with (A) 5%, (B) 10% and (C) 20% drug feeding amount.

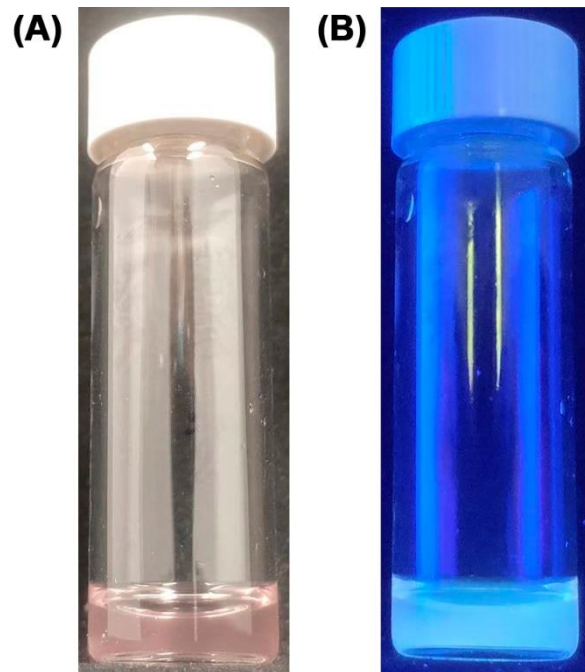


Fig. S7. The photographs of DOX-loaded micelles under ambient light (A) and 365 nm irradiation (B).

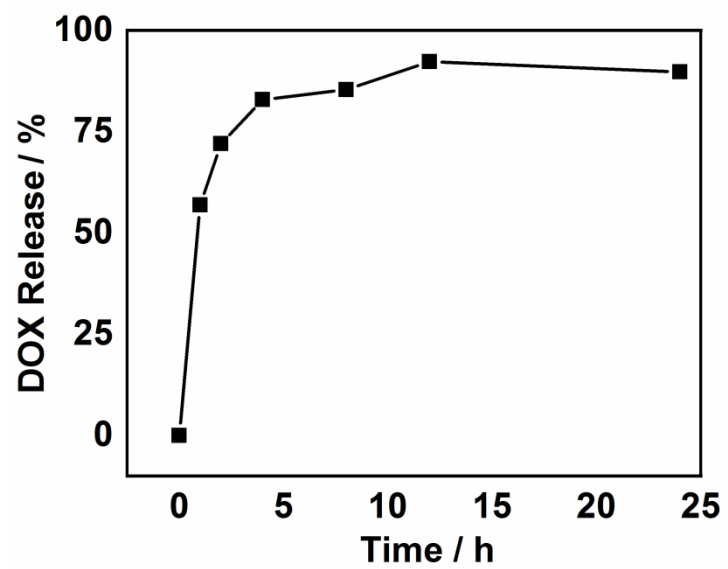


Fig. S8. Drug release from DOX-loaded micelles in PBS buffer.

Table S1 Parameters of DOX-loaded micelles with 5 %, 10 % and 20 % drug feeding amount.

	5 %	10 %	20 %
Feeding amount	(0.25 mg/mL)	(0.50 mg/mL)	(1.00 mg/mL)
Drug loading capacity (%)	0.5	1.3	2.7
Drug encapsulation efficiency (%)	10.9	12.3	13.4
Dynamic diameter (nm)	80.26	82.47	87.57